

Does anyone *actually* know what the blue economy is?

Presented By:

Katie Castagno, Corey Hendricks,
and Caitlin Townsend



Katie Castagno
Center for Coastal Studies



Corey Hendricks
Duck Island Shellfish



Caitlin Townsend
Net Your Problem

Meet Katie

Director, Land-Sea Interaction Program
Center for Coastal Studies, Provincetown

previously...

- *Northeastern/The Nature Conservancy:* shoreline stabilization
- Elementary school science teacher
- *PhD at MIT/WHOI:* historic and prehistoric storm impacts on marshes
- *Masters at URI:* marine affairs: salt marshes and shellfishing
- Nature day camp counselor
- *Undergrad at Smith:* environmental geosciences



Meet Corey

Owner/Farm Manager/Wild Shellfisherman
Duck Island Shellfish Company LLC

- Wild Fisherman (quahogs, razor clams)
- Massachusetts Maritime Academy 2014
- Field Crew Manager - Aquacultural Research Corp.
- Director of Shellfish Farm - Mashpee Wampanoag Tribe

The Blue economy has been a lifestyle choice that aligns with my beliefs. While also continuing a tribal and family tradition.



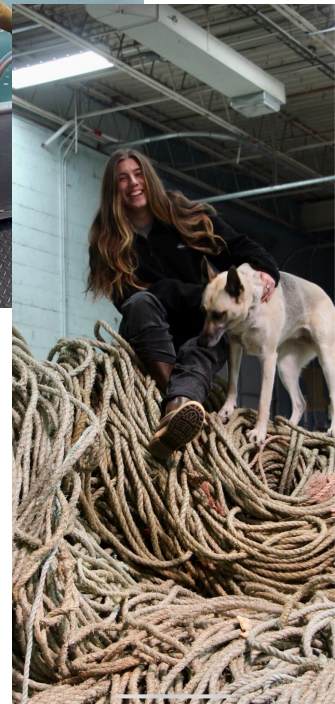
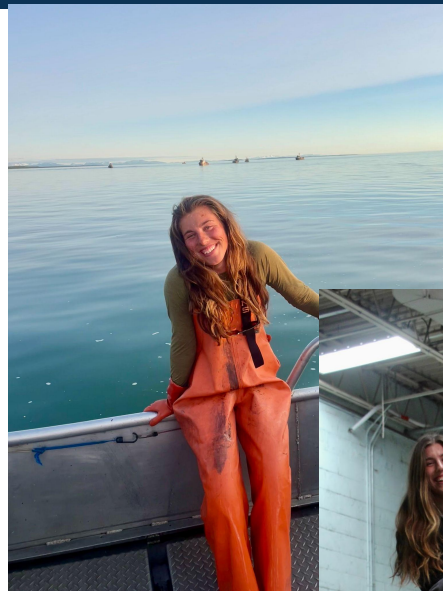
Meet Caitlin

New England Representative - Net Your Problem LLC

Commercial Fisherman - Lobster and Wild Alaskan Sockeye
Salmon / Townsend Lobster Company / Slipstream Sockeye

- Born and raised in Truro
- Graduated from Massachusetts Maritime Academy in 2021
- Raised lobstering and fishing alongside my Dad
- US seafood and fisheries advocate
- After an internship with the Center for Coastal Studies, I found Net Your Problem where we recycle and responsibly dispose of end-of-life fishing gear and maritime industry waste as well as consult the industry on sustainability efforts
- Bartend and wait tables to help pay the bills

Big fan of the hustle - what can you do in the industry you love or adjacent to that industry make money? **Always say YES!**



What does the Blue Economy mean to me?

Find your niche in the industry.

**Work with and make alliances
with people you aspire to be.**

Make decisions strategically.